

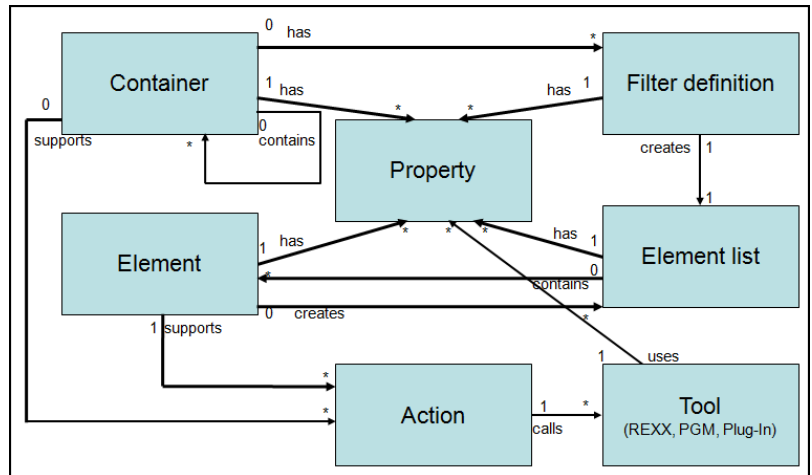
Model driven Tool Integration for „Eclipse“

TAURUS supports the customization and extension of Eclipse by using a model-driven approach. After applying the appropriate configuration, new and existing mainframe and client tools can be easily integrated into Eclipse. **TAURUS** substantially reduces the cost of implementing an eclipse based mainframe development environment as well as the effort required for the future maintenance of the tool integration.

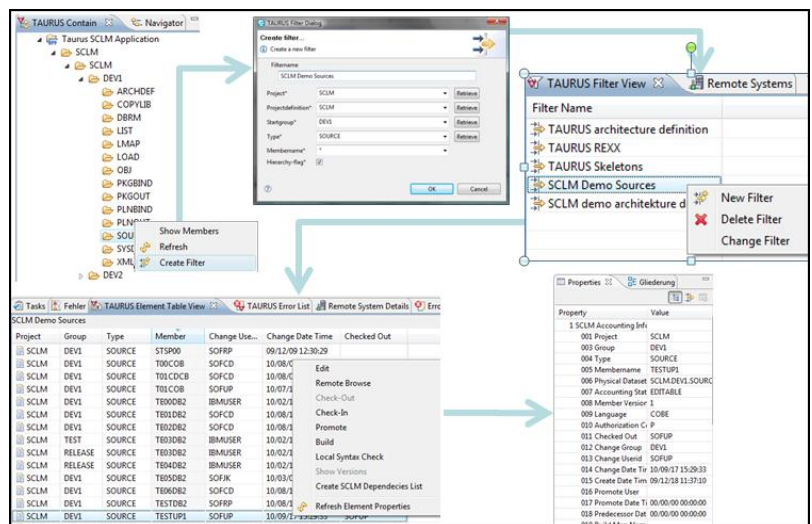
TAURUS Scope of Supply and Services

By using the graphical **TAURUS** editor based on the Eclipse modeling framework, you will be able to extend the Eclipse user interface to support your own views and features with a significant increase in flexibility:

- Modeling tree and table structures as well as filter and property views
- Modeling input, output and selection dialogs
- Configuring context menu actions, buttons, menu functions
- Powerful configuration to integrate mainframe and client tools including the configuration of input and output parameters as well as input and output files
- Validating the consistency of the **TAURUS** model



The **TAURUS** client interprets the centrally managed model and dynamically generates the user interface (e.g. trees, tables, dialogs). All content and all actions (e.g. context menus) are generated dynamically. Optional pre-configured open solutions for integrating IBM SCLM, CA ENDEVOR Change Manager and Serena ChangeMan ZMF are available.



TAURUS Advantages:

- Highly increased acceptance and productivity in application development by providing a fast, scalable integration of a customized user interface.
- Significant reduction of the implementation effort by a flexible, rapid integration of the existing home-grown or 3rd party mainframe tools. This applies particularly to the tool integration needed to support the software configuration management.
- Reduction in the complexity and training costs to setup and maintain the application development environment based on Eclipse, because plug-in development effort is not needed.
- Openness to easy, seamless integration of new development tools.